



Elegant in taste, playful by nature.



SARAH'S CREEK  
SOUTH AFRICA





## Wine of origin, Western Cape, South Africa

South Africa is located at the tip of the African continent with most wine regions located near the coastal influences of the Atlantic and Indian oceans.

These regions have a mostly mediterranean climate that is marked by intense sunlight and dry heat. Winters tend to be cold and wet with potential snowfall at higher elevations.

This combination of extreme conditions, combined with a variety of some of the oldest terroir in the world makes this region ideally suited to producing high quality grapes and subsequently great wines.







SARAH'S CREEK  
SOUTH AFRICA





**SARAH'S CREEK**  
SOUTH AFRICA

## Premium Sarah's Creek Sauvignon Blanc 2020

A combination of early and late harvesting of grapes produces a complex Sauvignon Blanc. Lees contact for 3 months to give fullness to the wine.

This Sauvignon Blanc has a green/yellow tinge. The nose displays passion fruit, gooseberries and ripe figs. A fruit driven wine with a crisp and zesty finish.

### Analysis

Alcohol: 13%      Acidity: 7.1 g/L  
pH: 3.14      Residual sugar: 4.0 g/L  
Box dimensions case of 6: 253 x 170 x 307  
Weight of box: 7.5kg | Units per Pallet: 112 x 6

### Food pairing

Enjoy chilled with lime grilled fish and avocado salad







**SARAH'S CREEK**  
SOUTH AFRICA

## Premium Sarah's Creek Chardonnay 2021

The Robertson Wine Valley produces exceptional Chardonnays that are grown on limestone soils in the area. Chardonnay on these specific terroirs creates a wine with exceptional citrus and mineral notes.

A lightly wooded dry white wine with hints of orange blossom and peach on the nose. The palate is creamy and fresh.

### Analysis

Alcohol: 13.88%      Acidity: 6.8 g/L  
pH: 3.12      Residual sugar: 4.8 g/L  
Box dimensions case of 6: 253 x 170 x 307  
Weight of box: 7.5kg | Units per Pallet: 112 x 6

### Food pairing

Creamy pasta dishes or a mild curry with coconut and sambals.

PEACHES

MELLON

ORANGE  
BLOSSOM







**SARAH'S CREEK**  
SOUTH AFRICA

## Sarah's Creek Demi-sec Sparkling Wine 2021

A delightful semi sweet fruity sparkling wine with turkish delight aromas and raspberry tones. Our sparkling wine was produced using 100% White Muscadel grapes.

Our vineyards are cultivated on well drained alluvial soils with drip irrigation. Harvesting is done by machine and hand. Harvesting with the machine has the advantage of harvesting at night when the grapes are cool resulting in higher quality wines.

Sarah's Creek Demi sec sparkling wine is carbonated under pressure and has a maturation potential of 1 to 3 years.

### Analysis

Alcohol: 10%      Acidity: 5.07 g/ L  
pH: 3.44      Residual sugar: 38 g/ L  
Box dimensions case of 6: 273 x 183 x 329  
Weight of box: 9kg | Units per Pallet: 104 x 6

### Food pairing

Sparkling wine to celebrate any occasion. Enjoy with canapes, white meats and mild curry.

TURKISH  
DELIGHT

FLORAL

RASPBERRY







SARAH'S CREEK

SOUTH AFRICA

## Premium Sarah's Creek Shiraz 2020

These Shiraz vines are grown on fertile lime rich soils. In conjunction with drier climates, healthy concentrated grapes resulted in a rich and structured wine.

Prominent aromas of dark cherries, tobacco and sweet violets. A hint of pepper on the nose with a long finish.

### Analysis

Alcohol: 14%

Acidity: 5.7 g/L

pH: 3.50

Residual sugar: 2.6 g/L

Box dimensions case of 6: 243 x 165 x 300

Weight of box: 7.2kg | Units per Pallet: 120 x 6

### Food pairing

Slow cooked oxtail with samp and seasonal vegetables.

DARK  
CHERRY

SWEET  
VIOLET

PEPPER







SARAH'S CREEK

SOUTH AFRICA

## Premium Sarah's Creek Cabernet Sauvignon 2019

A popular cultivar that is produced on limestone and shale soils. The vineyards are managed to ensure the fruit is not shaded.

This Cabernet Sauvignon shows notes of blackcurrant, cassis and dried herbs. The palate is structured and soft with a smoky finish.

### Analysis

Alcohol: 14%

Acidity: 5.6 g/L

pH: 3.54

Residual sugar: 2.8 g/L

Box dimensions case of 6: 243 x 165 x 300

Weight of box: 7.2kg | Units per Pallet: 120 x 6

### Food pairing

Red meats like fillet with a mushroom sauce.



BLACKCURRANT



DRIED  
HERBS



OAK







## Premium Sarah's Creek Merlot 2019

The vineyards are managed intensively to ensure ripe tannins and phenolic compounds. Canopy management and bunch thinning is very important.

Abundance of cherries and plums on the nose with subtle hints of vanilla and smoky notes. The palate is soft with a juicy finish.

### Analysis

Alcohol: 14.50%      Acidity: 6.0 g/L  
pH: 3.51      Residual sugar: 2.3 g/L  
Box dimensions case of 6: 243 x 165 x 300  
Weight of box: 7.2kg | Units per Pallet: 120 x 6

### Food pairing

Lamb shank served with sour cream mashed potatoes and seasonal vegetables.







SARAH'S CREEK

SOUTH AFRICA

## Premium Sarah's Creek Semi Sweet Red 2020

A playful fruit driven smooth red wine with a touch of sweetness. This wine was produced to enjoy in winter or slightly chilled on warmer days.

The nose displays essence of summer berries and spice. The palate is fresh with a balanced smooth sweet finish.

### Analysis

Alcohol: 14%

Acidity: 5.5 g/L

pH: 3.8

Residual sugar: 28 g/L

Box dimensions case of 6: 243 x 165 x 300

Weight of box: 7.2kg | Units per Pallet: 120 x 6

### Food pairing

Enjoy slightly chilled with a beef carpaccio salad in summer or wood fired pizza with pepperoni and basil with good company.







SARAH'S CREEK  
SOUTH AFRICA

## Premium Sarah's Creek Sweet Red 2020

A sweet fruit driven red wine with a smooth finish. This wine was produced to enjoy in winter or slightly chilled on warmer days.

The nose displays essence of summer berries and spice. The palate is fresh with a balanced smooth sweet finish.

### Analysis

Alcohol: 13.50%      Acidity: 6.0 g/L  
pH: 5.80      Residual sugar: 65 g/L  
Box dimensions case of 6: 243 x 165 x 300  
Weight of box: 7.2kg | Units per Pallet: 120 x 6

### Food pairing

Enjoy slightly chilled with a beef carpaccio salad in summer or wood fired pizza with pepperoni and basil with good company.







## Premium Sarah's Creek Pinotage 2019

Pinotage is a South African grape varietal crossing between Pinot Noir and Cinsaut. This resulted in an intense dark fruit with high tannins and anthocyanins.

Our grapes are grown in the Breederiver Valley and Langeberg mountain slopes.

The wine was matured in 40% French/American oak and 60% was aged in stainless steel tanks.

### Analysis

Alcohol: 14%      Acidity: 5.1 g/ L  
pH: 3.63      Residual sugar: 3.6 g/ L  
Box dimensions case of 6: 243 x 165 x 300  
Weight of box: 7.2kg | Units per Pallet: 120 x 6

### Food pairing

Sticky barbeque ribs with fries and salad or seasonal vegetables.







**SARAH'S CREEK**  
SOUTH AFRICA

## Reserve Sarah's Creek Pinotage 2017

Pinotage is a South African grape varietal crossing between Pinot Noir and Cinsaut. This resulted in an intense dark fruit with high tannins and anthocyanins.

This Pinotage was naturally fermented and matured in 3rd fill or older French oak barrels for 10 to 14 months.

Sarah's Creek Reserve Pinotage is deep in colour, showcasing black cherries, cigar box and plums with a hint of mocha.

Gentle ripe tannins with a smooth finish.

### Analysis

Alcohol: 13.80%

Acidity: 5.9 g/ L

pH: 3.48

Residual sugar: 2.4 g/ L

Box dimensions case of 6: 303 x 256 x 174

Weight of box: 8.6kg | Units per Pallet: 105 x 6

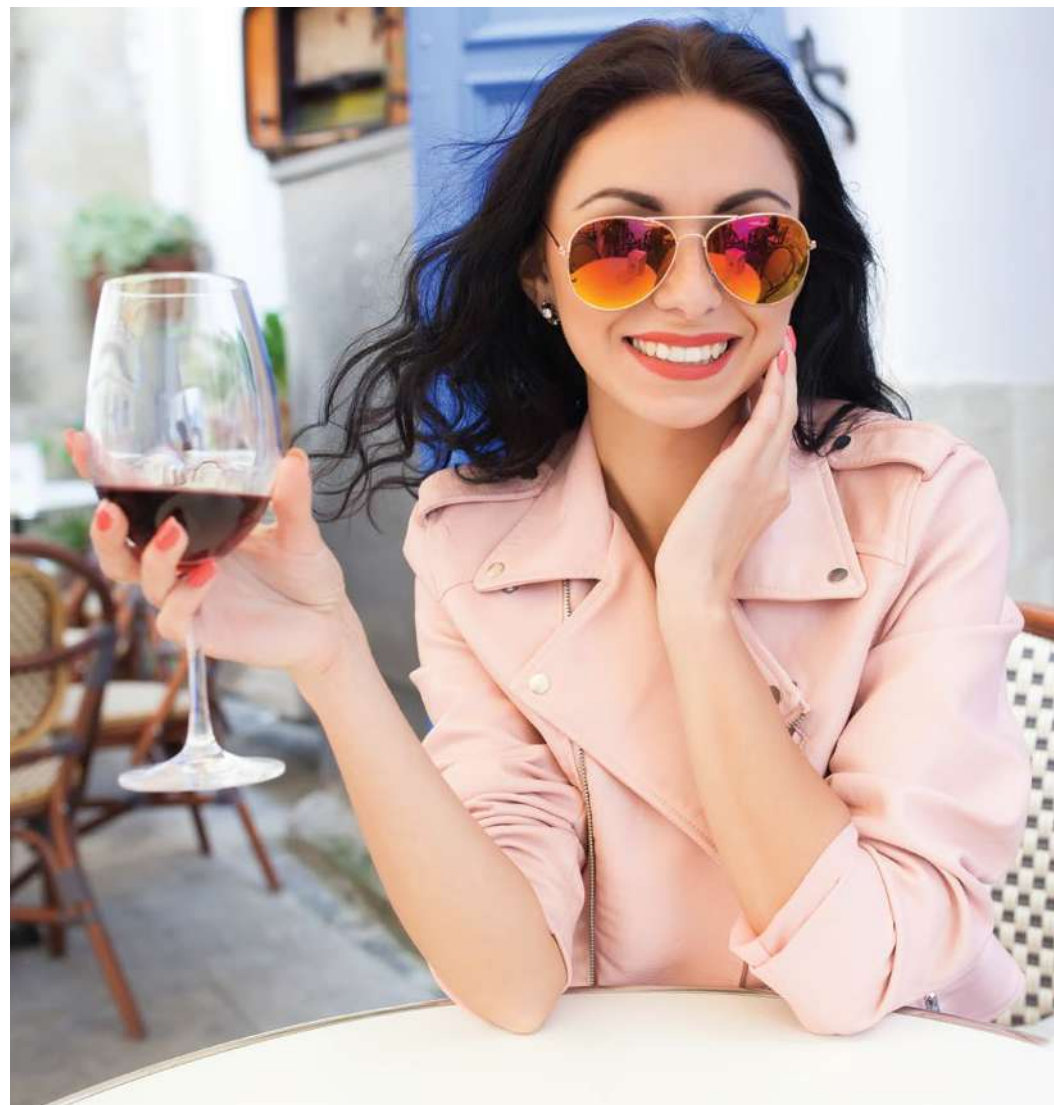
### Food pairing

Can be enjoyed with all red meats or sticky barbeque ribs, fries and salad.

BLACK  
CHERRIES

PLUMS

MOCHA







SARAH'S CREEK

SOUTH AFRICA

## Reserve Sarah's Creek Shiraz 2017

Our Shiraz Reserve is carefully selected each vintage to showcase what Robertson Wine Valley has to offer.

A spicy cultivar with gentle, ripe tannins and a full rich pallet. This Shiraz is fruit driven, with dark cherries and hints of white pepper.

This Shiraz was naturally fermented and matured in 3rd fill or older French oak barrels for 10 to 14 months.

### Analysis

Alcohol: 13.8%

Acidity: 6.3 g/L

pH: 3.5

Residual sugar: 4.6 g/L

Box dimensions case of 6: 303 x 256 x 174

Weight of box: 8.6kg | Units per Pallet: 105 x 6

### Food pairing

Can be enjoyed with all red meats like ox tail and seasonal vegetables.

DARK  
CHERRY

FRUIT  
DRIVEN

WHITE  
PEPPER







## Sarah's Creek

Sarah's Creek has headquarters situated in the iconic Cape of Good Hope.

We pride ourselves on expertise in all stages of the winemaking business, passed down through the generations.



## Strategic Vision

We are a consumer centric wine company with a long-term vision and passion for our wine.

We aim to respect the principals of sustainable development while maintaining a constant focus on quality.

Our objective is to offer consumers high-quality, affordable wines which express the terroir and aromatic complexity of the grape varieties of the Western Cape region.





## Vineyards

All our grapes are selected from wine estates where the terroir and quality fit the requirements of each of our wines.

## Winemaking

The core focus of Sarah's Creek is to produce premium wines. This is achieved through a combination of traditional practices and modern methods, turning our grapes into spectacular, easy drinking, everyday wines.

Our resident winemaker, Marga Malherbe, is involved throughout the production process. This hands on approach by the family guarantees the production of quality wines.

## Distribution

Efficient and cost-effective operation to deliver world-class products to our global markets.

Our import/export company, Chin-Africa Impex can help you by applying business models in accordance to your needs, container consolidations, assist with business strategies, obtain cost advantages, investigate value chain considerations and advise on resources required for the successful distribution of FMCG products in the various target markets.

## Sustainability

Sarah's Creek is committed to the management of economic, environmental and social factors.





## Marketing strategy

To focus on high-growth segments of the wine industry, priority markets and those with high future potential.

Develop a global presence and maintain strong relationships with distributors and customers.



## Brand recognition

To be recognisable, relevant and "stand out".

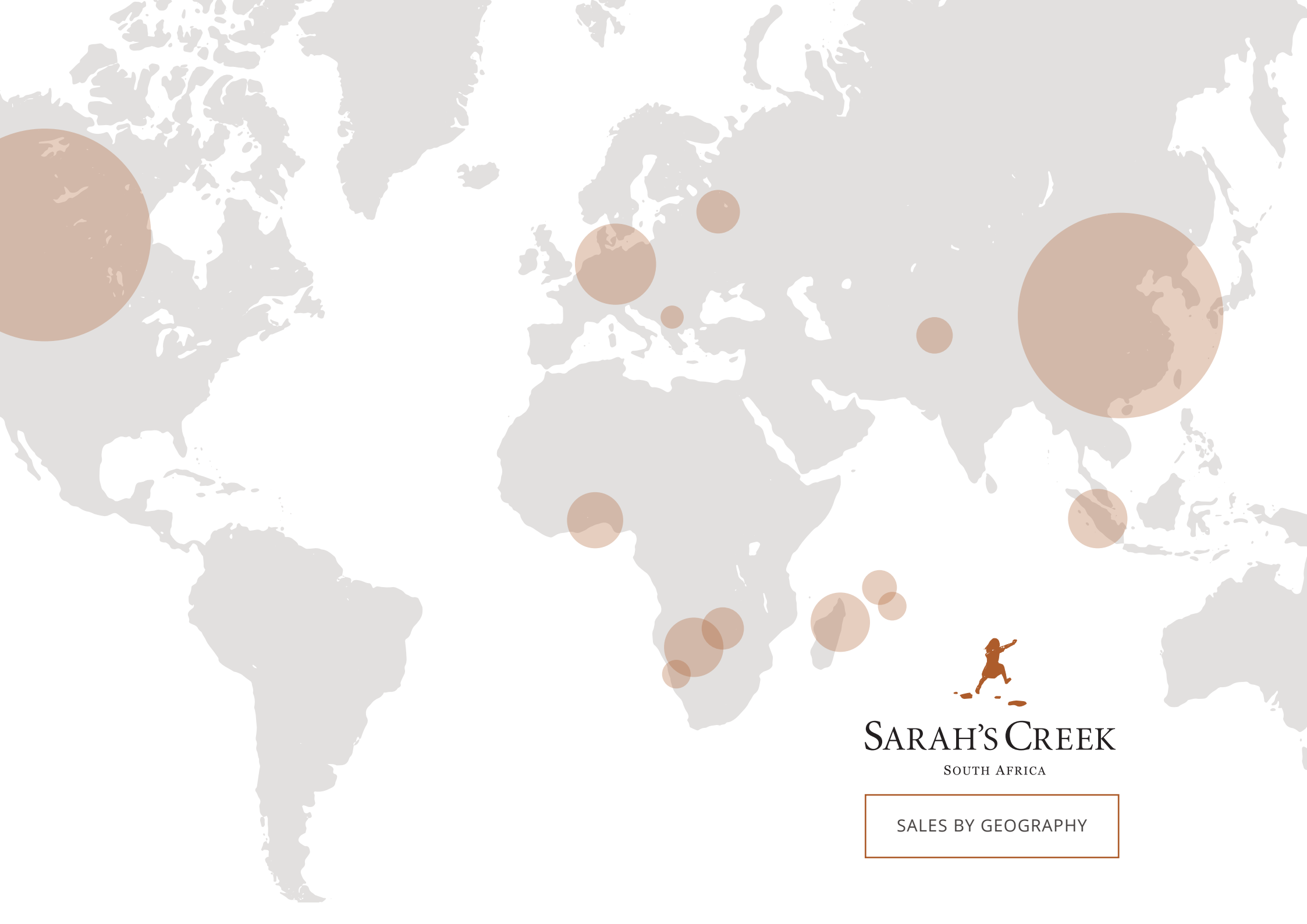
Share the brand experience around the wine and engage customers using social media channels.



## Position in market

Efficient and cost-effective operation to deliver world-class products to our customers with high quality standards.





SARAH'S CREEK

SOUTH AFRICA

SALES BY GEOGRAPHY



## THE LEGEND

Sarah's Creek is inspired by a great aunt in the Malherbe family, who as a child, used to bide her time on the way to school by taking the scenic route via her favorite creek, to absorb the sounds and sights of nature.

Time was of little concern for this young adventurer as she jumped from stone to stone across the creek, stopping only to admire the mesmerizing dragonflies and butterflies hovering above the water.

Today, our wines are allowed to mature in an identical timelessly-carefree sense, absorbing nature to develop our decadent flavours.





# SARAH'S CREEK

SOUTH AFRICA

## STAY IN TOUCH



[www.sarahscreek.co.za](http://www.sarahscreek.co.za)



[www.instagram.com/sarah-screekwines/](https://www.instagram.com/sarah-screekwines/)



[www.facebook.com/sarah-screek/](https://www.facebook.com/sarah-screek/)

## CONTACT DETAILS

T | +27 21 300 1731

E | [info@chin-africa.com](mailto:info@chin-africa.com)

## POSTAL ADDRESS

Waterfront Terrace 2,  
Tygerwaterfront, Bellville, 7530,  
Cape Town, South Africa

EXPLORE OUR WINES



[www.sarahscreek.co.za](http://www.sarahscreek.co.za)